

**DEWALT**®

ENGINEERED BY **Powers**™

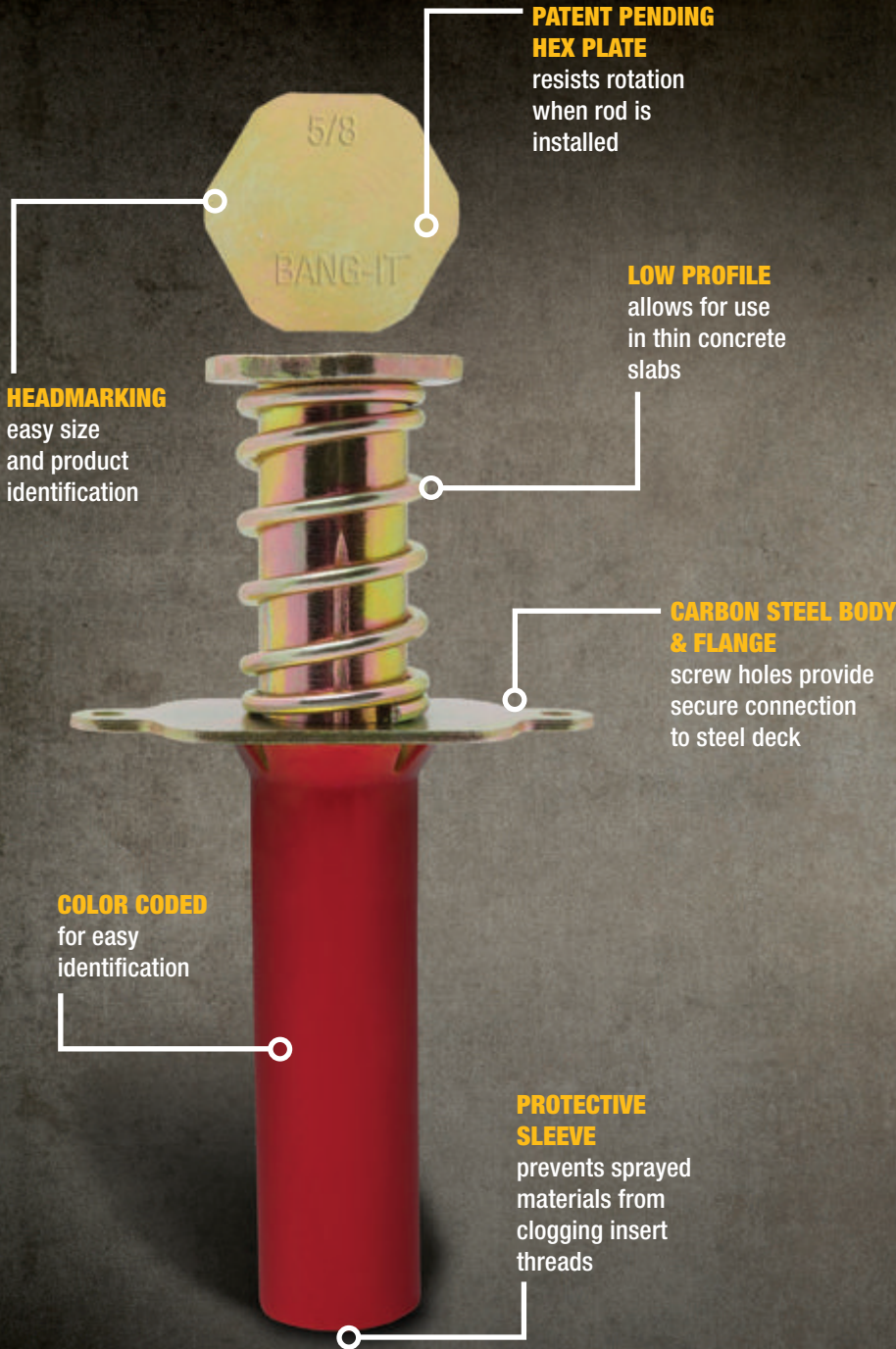
# Cast-In-Place Concrete Inserts



**Bang-It®+ and Wood-Knocker® II+**

# DEWALT®

ENGINEERED BY **Powers™**

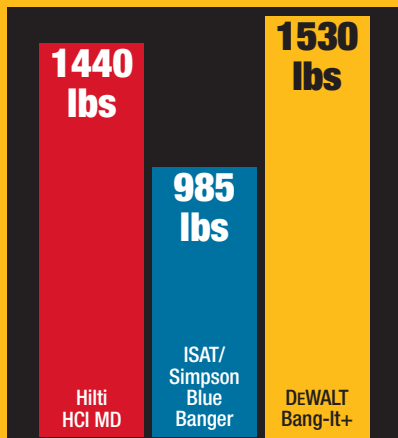


## Multi-Thread



	Hilti HCl MD	ISAT/Simpson Blue Banger	Mason West Punch & Lock	DEWALT Bang-It+
ICC Approval	ESR-3713	ESR-3707	No	ESR-3657
Multi-thread	No	Yes	Yes	Yes
Dia. Sizes	4	5	4	5
Anti-rotation	Hex Head	No	Hex Head	Hex Head
I.D.	Color Coded	Blue	Blue	Color Coded

## Highest Tension Load (ASD)\*



\*Compared to key competitors with ICC approvals: Upper flute B-Deck; 1/2" rod (part number 7562), 3000 PSI concrete. Source: www.icc-es.org

NEW SIZE

Bang-It+ and Wood-Knocker II+ size color code

1/4

3/8"

3/8" & 1/2"

1/2"

5/8"

3/4"

# Bang-It®+ Cast-In-Place Concrete Inserts



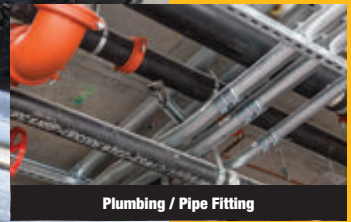
Typical Bang-It+ & Wood-Knocker II+ Applications



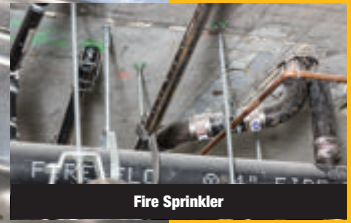
Mechanical



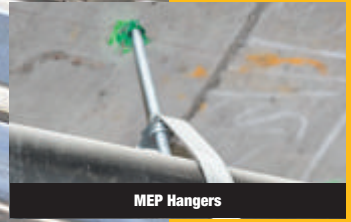
Electrical



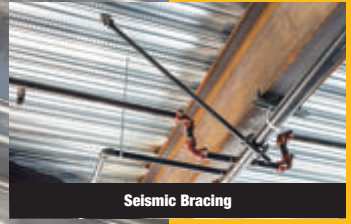
Plumbing / Pipe Fitting



Fire Sprinkler



MEP Hangers



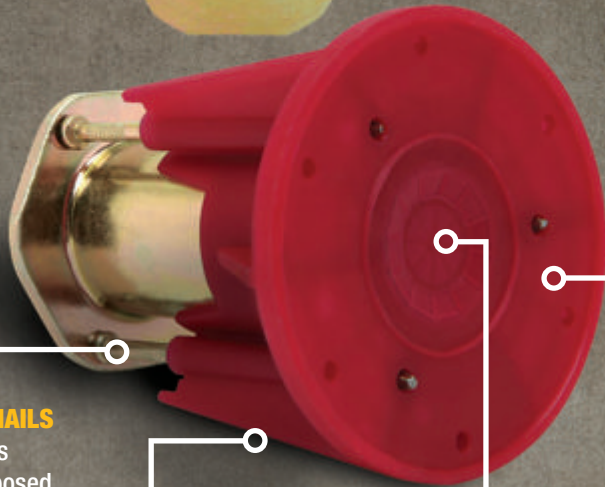
Seismic Bracing

# DEWALT

ENGINEERED BY **Powers**™



**HEADMARKING**  
easy size  
and product  
identification



**RAISED NAILS**  
eliminates  
sharp exposed  
nails

**COLOR CODED**  
for easy  
identification;  
flange remains  
visible after  
form is stripped

**THREAD PROTECTION  
MEMBRANE**  
protects threads  
from concrete intrusion  
during pour

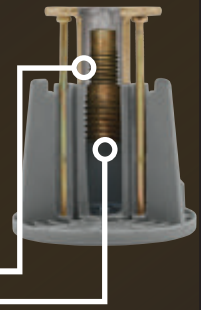
**LARGE FINS**  
decreases snags from  
rebar and PT cables

**NEW  
SIZE**

## Multi-Thread

**NEW  
SIZE**

Gray Wood-Knocker II+ accepts 3/8" and also 1/2" rod or bolt; saves time and inventory



	Hilti HCI WF	ISAT/ Simpson Blue Banger	Caddy Rod Lock	DEWALT Wood- Knocker II+
ICC Approval	ESR-3713	ESR-3599, 3707	ESR-3864	ESR-3657
Multi- thread	No	3/8" & 3/4"	No	3/8" & 1/2"
Base Width	1.5"	1.5"	1.625"	2.35"
Concrete Protec- tion	None	None	None	Membrane
I.D.	Color Coded	Blue	Blue	Color Coded

## Kick Stability

**14  
degrees\***

**90%  
Improvement**

**1  
degree\***

Wood-Knocker®

DEWALT  
Wood-Knocker® II+

\*degrees of deflection when kicked

Bang-It+ and Wood-Knocker II+ size color code

1/4

3/8"

3/8" & 1/2"

1/2"

5/8"

3/4"

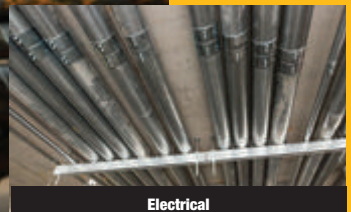
# Wood-Knocker® II+ Cast-In-Place Concrete Inserts



Typical Bang-It+ & Wood-Knocker II+ Applications



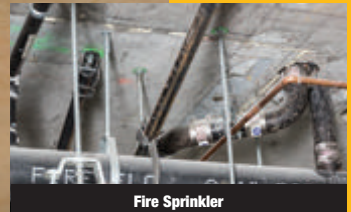
Mechanical



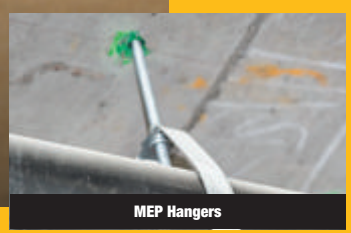
Electrical



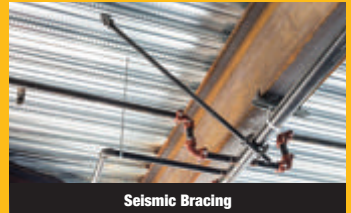
Plumbing / Pipe Fitting



Fire Sprinkler



MEP Hangers



Seismic Bracing

## Wood-Knocker® II+ No Nail



**DESIGNED WITHOUT NAILS** for attachment to formwork using self-drilling screws instead of nails



**Wide base – Reduces kick-over after installation**

**SELF-DRIVING SCREWS** may be driven through screw bosses that have been pre-molded into the base (screws sold separately)

# DEWALT

ENGINEERED BY **POWERS**

## Bang-It®+ Cast-In-Place Concrete Inserts

### Bang-It®+ Deck Insert Insert Size Matches Rod Size

CAT #	SIZE	COLOR	QTY	
7540	1/4"	Brown	100	
7542	3/8"	Green	100	
7544	1/2"	Yellow	100	
7546	5/8"	Red	50	
7548	3/4"	Purple	50	
7543	3/8" & 1/2"	Gray	100	

### Installation Systems

CAT #	DESCRIPTION	
DCD991P2	20V Max* XR Lithium Ion Cordless Drill Driver (4.0 AH)	
DCF887M2	20V Max* XR 1/4" 3-Speed Impact Driver Kit (4.0 AH)	
DWD220	1/2" VSR Pistol Grip Drill with E-Clutch Anti-Lock Control	
D180014IR	7/8" Impact Ready® Hole Saw	
D180020IR	1-1/4" Impact Ready® Hole Saw	
DWA1786IR	3/16" – 7/8" Impact Ready® Step Drill Bit	
DWA1787IR	3/4" – 1-7/8" Impact Ready® Step Drill Bit	
07560	Bang-It Stand Up Pole Tool – 29"	
07562	Carbide Hole Saw 13/16"	
07564	Carbide Hole Saw 1-3/16"	
07566	Centerbit with Spring Replacement	

\* Maximum initial voltage (measured without a workload) is 20 volts. Nominal voltage is 18.

# Wood-Knocker® II+

## Cast-In-Place Concrete Inserts

### Wood-Knocker® II+ Deck Insert Insert Size Matches Rod Size

CAT #	DESCRIPTION	COLOR	QTY		
PFM2521100	1/4"	Brown	100		
PFM2521100NN	1/4" (No Nails)	Brown	100		
PFM2521150	3/8"	Green	100		
PFM2521150NN	3/8" (No Nails)	Green	100		
PFM2521200	1/2"	Yellow	100		
PFM2521200NN	1/2" (No Nails)	Yellow	100		
PFM2521250	5/8"	Red	100		
PFM2521250NN	5/8" (No Nails)	Red	100		
PFM2521300	3/4"	Purple	100		
PFM2521300NN	3/4" (No Nails)	Purple	100		
PFM2521350	3/8 or 1/2"	Gray	100		
PFM2521350NN	3/8 or 1/2" (No Nails)	Gray	100		



7453

PFM2521350

# DEWALT®

ENGINEERED BY **POWERS™**

## Bang-It®+ and Wood-Knocker®II+ Cast-In-Place Concrete Inserts

DeWALT LOCATIONS		Field Service	DeWALT Tool Service	Anchor Distribution Center
ALABAMA	Birmingham	205-942-0538		
	Mobile	251-602-1000		
ALASKA	Anchorage	907-561-7181		
ARKANSAS	Little Rock	501-372-3040		
ARIZONA	Phoenix	602-437-1200		
	Phoenix	602-431-8024		
CALIFORNIA	San Francisco	510-783-3959		
	Hayward	510-293-1500		
	San Diego	858-279-2011		
	Anaheim	714-414-0369		
	Sacramento	916-344-3520		
	Ontario	909-930-1437		
COLORADO	Denver	303-922-8325		
	Denver	303-922-9202		
CONNECTICUT	Hartford	860-563-5800		
FLORIDA	Fl. Lauderdale	954-321-6635		
	Tampa	813-884-0434		
	Orlando	407-657-0474		
	Orlando	813-626-4500		
GEORGIA	Atlanta	770-246-1710		
	Atlanta	678-966-0000		
HAWAII	Honolulu	808-842-9925		
IOWA	Des Moines	515-270-1340		
ILLINOIS	Addison	630-521-1097		
	Addison	630-960-3156		
INDIANA	Indianapolis	317-243-8308		
	Indianapolis	317-773-1668		
KANSAS	Kansas City	913-495-4330		
	Kansas City	816-472-5033		
	Wichita	316-943-1271		
KENTUCKY	Louisville	502-380-3748		
LOUISIANA	New Orleans	504-832-2187		
	Baton Rouge	225-296-3191		
MARYLAND	Baltimore	410-536-0722		
	Capital Heights	301-333-0865		
	Baltimore / DC	301-773-1722		
MASSACHUSETTS	Boston	781-329-3407		
MICHIGAN	Grand Rapids	616-261-0425		
	Detroit	248-597-5000		
	Detroit	248-543-8600		
MINNESOTA	Minneapolis	952-884-9191		
	Minneapolis	612-331-3770		
MISSOURI	St. Louis	314-997-9100		
	Kansas City	816-472-5033		
NEVADA	Las Vegas	702-889-6025		
NEW JERSEY	Elmwood Park	201-475-3524		

DeWALT LOCATIONS		Field Service	DeWALT Tool Service	Anchor Distribution Center
NEW MEXICO	Albuquerque	505-884-1002		
NEW YORK	Buffalo	716-884-6220		
	Queens	718-335-1042		
	Rochester	585-228-2080		
	Long Island	631-952-2008		
	Albany	518-785-1867		
	New York	800-524-3244		
NORTH CAROLINA	Charlotte	704-392-0245		
	Charlotte	704-375-5012		
	Greensboro	336-852-1300		
	Raleigh	919-878-0357		
OHIO	Cleveland	440-842-9100		
	Cincinnati	513-772-3111		
	Columbus	614-895-3112		
OKLAHOMA	Oklahoma City	405-634-8403		
	Tulsa	918-249-8641		
OREGON	Portland	503-255-6556		
PENNSYLVANIA	Philadelphia	215-271-5500		
	Pittsburgh	412-642-0204		
	Allentown	610-435-9544		
	York	717-755-3441		
SOUTH CAROLINA	Charleston	843-745-9197		
	Greenville	864-299-8662		
TENNESSEE	Memphis	901-384-8100		
	Nashville	615-242-1633		
	Nashville	615-248-2667		
	Knoxville	865-688-0921		
TEXAS	Dallas	972-446-2996		
	Dallas	972-446-5985		
	Houston	713-466-1194		
	Houston	281-491-0351		
	San Antonio	210-732-1221		
	Fort Worth	817-831-3828		
UTAH	Austin	512-382-3971		
	Salt Lake City	801-486-5828		
	Salt Lake City	801-466-9428		
VIRGINIA	Virginia Beach	757-363-0091		
WASHINGTON	Seattle	206-763-2010		
	Spokane	509-535-9252		
	Seattle	425-251-0312		
WEST VIRGINIA	Charleston	304-343-0289		
WISCONSIN	Milwaukee	414-645-4285		
	Milwaukee	414-645-8821		

DeWALT, ELCO, & POWERS Anchors and Fasteners Inquiries: 800-524-3244

DeWALT, ELCO, & POWERS Anchors and Fasteners Technical Questions: email: [anchors@dewalt.com](mailto:anchors@dewalt.com)

Dealer Stamp

# 1-800-4 DEWALT®

[www.DEWALT.com](http://www.DEWALT.com)